

EQUIP. TYPE A390A/URA EXP. NO.

COL-306-0325-00

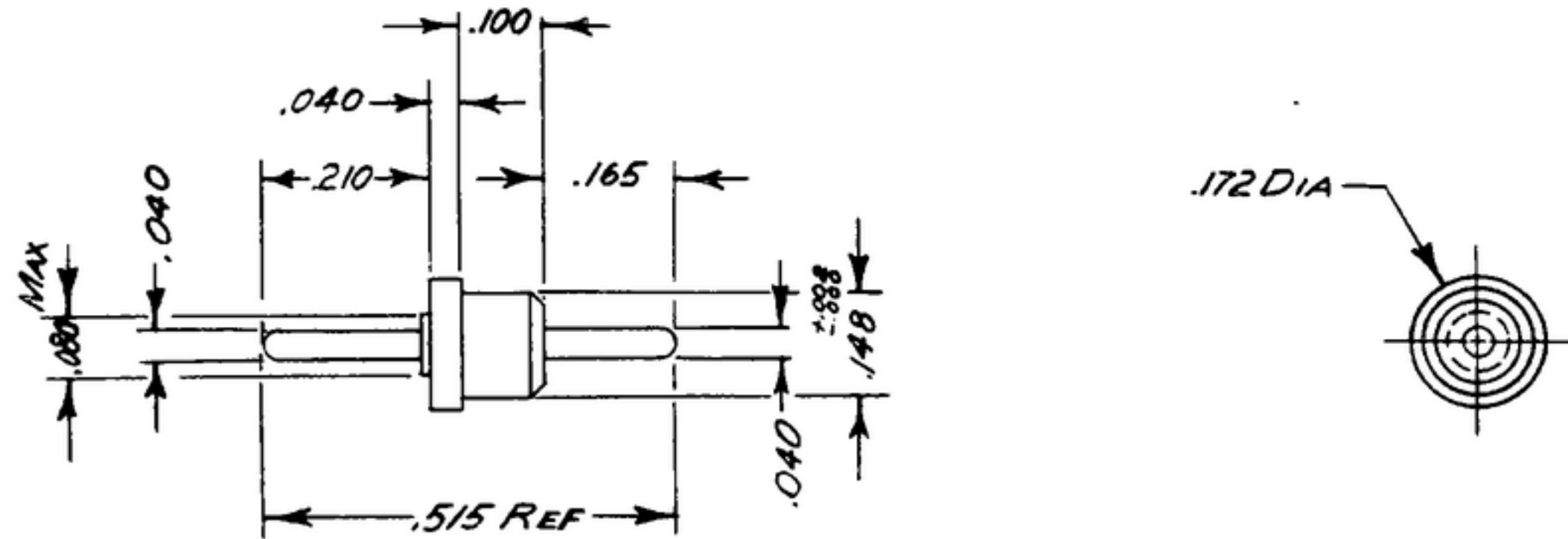
NOTICE: WHEN GOVERNMENT DRAWINGS, SPECIFICATIONS, OR OTHER DATA ARE USED FOR ANY PURPOSE OTHER THAN IN CONNECTION WITH A DEFINITELY RELATED GOVERNMENT PROCUREMENT OPERATION, THE UNITED STATES GOVERNMENT THEREBY INCURS NO RESPONSIBILITY NOR ANY OBLIGATION WHATSOEVER; AND THE FACT THAT THE GOVERNMENT MAY HAVE FORMULATED, FURNISHED, OR IN ANY WAY SUPPLIED THE SAID DRAWINGS, SPECIFICATIONS, OR OTHER DATA IS NOT TO BE REGARDED BY IMPLICATION OR OTHERWISE AS IN ANY MANNER LICENSING THE HOLDER OR ANY OTHER PERSON OR CORPORATION, OR CONFERRING ANY RIGHTS OR PERMISSION TO MANUFACTURE, USE, OR SELL ANY PATENTED INVENTION THAT MAY IN ANY WAY BE RELATED THERETO.

THIS DOCUMENT HAS BEEN PURCHASED BY THE GOVERNMENT AND MAY BE REPRODUCED AND USED IN CONNECTION WITH ANY GOVERNMENT PROCUREMENT OR MAINTENANCE OPERATION.

\* FOR INFORMATION ONLY. CONTRACTOR MAY AT HIS OPTION DEVIATE FROM THESE PROCESS DETAILS.

~~\* SWS APPROVAL~~  
~~SYM PR 10042-10~~

REVISIONS			
SYM	DESCRIPTION	DATE	APPROVAL
A1	A1 - WAS M 317	6 NOV. 59	42428-PC-59-A1-51 REV'D. PME



NOTES:

1. PART MAY BE # FT-5M-1 AS SUPPLIED BY SEAELECTRO CORP, NEW ROCHELLE, NEW YORK OR EQUAL, PROVIDING IT MEETS THE FOLLOWING DIMENSIONS SHOWN.

DESCRIPTION: INSULATED FEED-THRU TERMINAL.

INSULATING MATERIAL: TEFLON, SUPPLIED BY E.I. DUPONT, DENEMOURS & CO, INC, WILMINGTON, DEL, OR EQUAL.

METAL PARTS: BRASS

FINISH BRASS PARTS: M 310 PER SPEC MIL-F-14072.

(A1)

COLLINE PART NO.	ITEM	REQD	PART NO.	DESCRIPTION	MATL	MATL SPEC
LIST OF MATERIAL						
COLLINE PART NO. <u>559-0222-002</u>						

DRAWN <i>ECS</i>			CHECKED <i>[Signature]</i>	APPROVED	COLLINE RADIO CO. 559-0222-100A 14214-PH-51-93	DEPARTMENT OF THE ARMY SIGNAL CORPS ENGINEERING LABORATORIES FORT MONMOUTH NEW JERSEY  SM-B-249268
UNLESS OTHERWISE SPECIFIED: DECIMAL DIMENSIONS INCLUDING HOLE SIZES MAY VARY ±.005 FRACTIONAL DIMENSIONS INCLUDING HOLE SIZES MAY VARY ±1/64 MACHINED ANGLES MAY VARY ±1° SHEARED ANGLES MAY VARY ±.25° BROKEN ANGLES MAY VARY ±1° ECCENTRICITY BETWEEN ANY DIAMETERS ON THE SAME CENTERLINE SHALL NOT EXCEED .010 TOTAL INDICATOR READING. ALL DIMENSIONS ARE FINISH DIMENSIONS INCLUDING APPLIED FINISH AND ARE GIVEN IN INCHES					SIGNAL CORPS	
559-0345002 - 1 - SM-B-248995 SC-DL-248775					REVIEWED <i>PME</i>	
COLLINE NO.	QTY	NEXT ASSY	USED ON	APPLICATION	APPROVED <i>HLY</i> <i>PME</i>	
					DATE <i>17 JAN 56</i>	SCALE <i>4/1</i>